

VILLAS

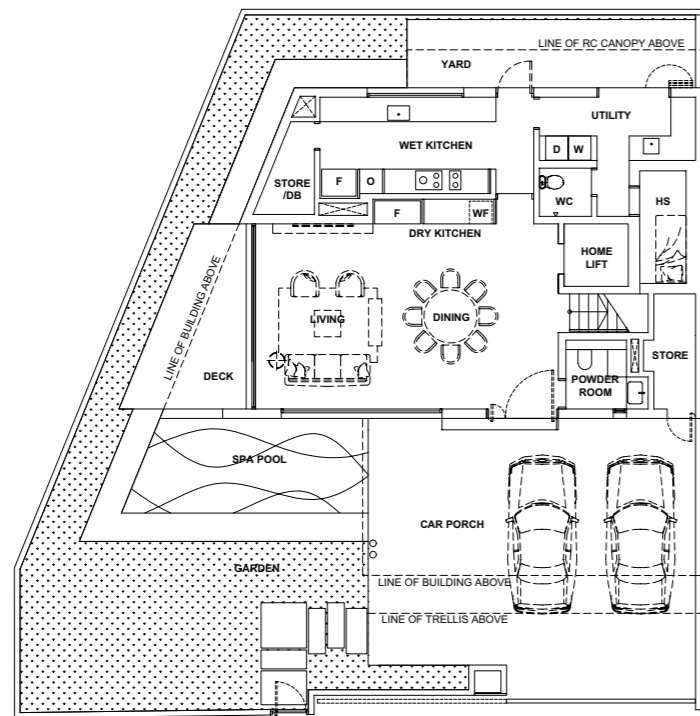
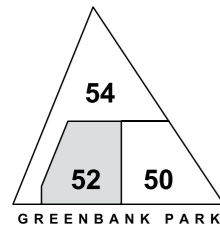
@ GREENBANK PARK



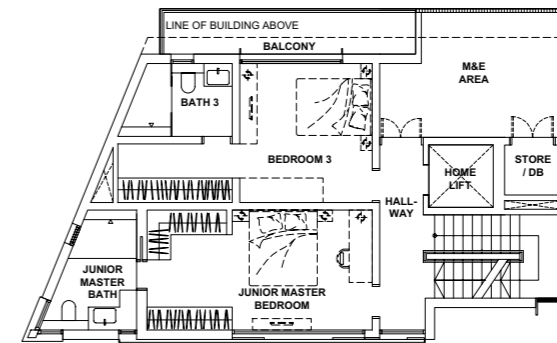
Artist's Impression

52 Greenbank Park
Singapore 589899

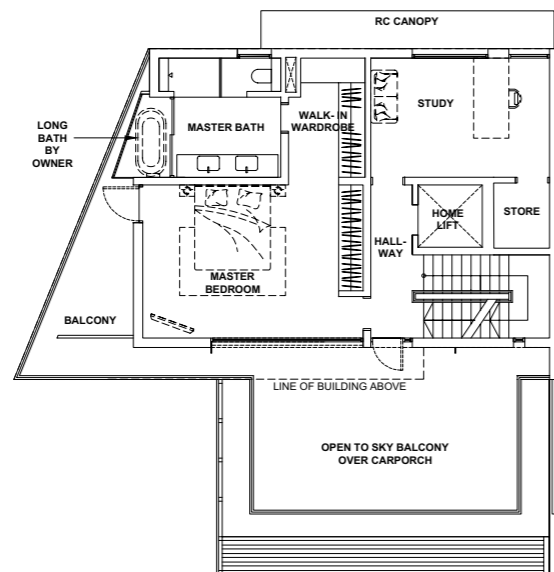
FLOOR PLAN



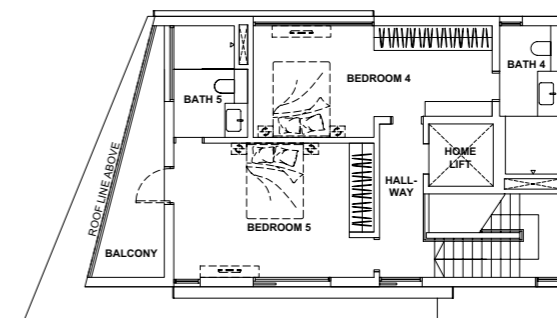
1ST STOREY
181 sqm / 1,948 sqft



3RD STOREY
106 sqm / 1,141 sqft



2ND STOREY
135 sqm / 1,453 sqft



ATTIC
84 sqm / 904 sqft

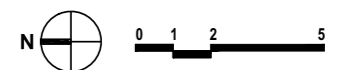
LEGEND

DB DISTRIBUTION BOARD
WC WATER CLOSET
HS HOUSEHOLD SHELTER

M&E MECHANICAL & ELECTRICAL
D DRYER
F REFRIGERATOR

W WASHING MACHINE
WF WINE FRIDGE
O OVEN

All areas are inclusive of all covered areas, car porch, balcony, open to sky balcony, deck, yard, lift and shaft voids, spa pool and M&E area. Furniture are indicative only and not provided. All plans are subject to amendment as approved by the relevant authorities. Floor areas are approximate measurements only and are subject to final survey.



Semi-Detached

Semi-Detached By award-winning RT+Q Architects



Artist's Impression



Artist's Impression



Artist's Impression

ESTIMATED BUILT-UP AREA FOR 52 GREENBANK PARK INCLUDES ALL COVERED AREAS, CAR PORCH, BALCONY, OPEN TO SKY BALCONY, DECK, YARD, LIFT AND SHAFT VOIDS, SPA POOL AND M&E AREA (LAND SIZE: 291 SQM / 3,132 SQFT)

1 ST STOREY	2 ND STOREY	3 RD STOREY	ATTIC	ESTIMATED BUILT-UP AREA
181 sqm / 1,948 sqft	135 sqm / 1,453 sqft	106 sqm / 1,141 sqft	84 sqm / 904 sqft	506 sqm / 5,446 sqft

Enquiry: 6226 6333 | sales@tongeng.com.sg
 Sales Gallery located at 101 Cecil Street, #12-01 Tong Eng Building
www.tongeng.com.sg



While all reasonable care has been taken in preparing this brochure, the Developer and agents shall not be held responsible for any inaccuracies or omissions, including but not limited to any variations arising from any change of facts or circumstances occurring after the date of print of this brochure. All visual representations including models, drawings, photographs, art renderings and illustrations are intended to portray only an artist's impression of the development and shall not be regarded as representations of fact. All information, specifications, renderings, visual representations and plans are correct at the time of print of this brochure and are subject to such changes as may be required by the Developer and/or required or approved by the relevant authorities and notified to the Developer after the date of print of this brochure and shall not form part of any offer or contract nor constitute any warranty by the Developer. All floor areas and other measurements are approximate measurements only and are subject to final survey. The Private Treaty shall form the entire agreement between the Developer and the purchaser and supersedes and cancels in all respects all previous representations, warranties, promises, inducements or statements of intention, expressions of opinion, whether written or oral made by the Developer and / or its agents which are not embodied in the Private Treaty, unless expressly agreed to in writing between the parties.

Developer: Tong Eng Brothers Pte Ltd (Co Reg 196000160W) • Location: LOT (S) 01314X, 01353V & 01354P MK16 at Greenbank Park • Tenure of Land: Estate in Fee Simple • Expected Date of Vacant Possession: 31 July 2027 • Expected Date of Legal Completion: 31 July 2030 • Building Plan Approval No.: A1653-21533-2021-BP01 dated 12 April 2023, A1653-21533-2021-BP02 dated 3 October 2023